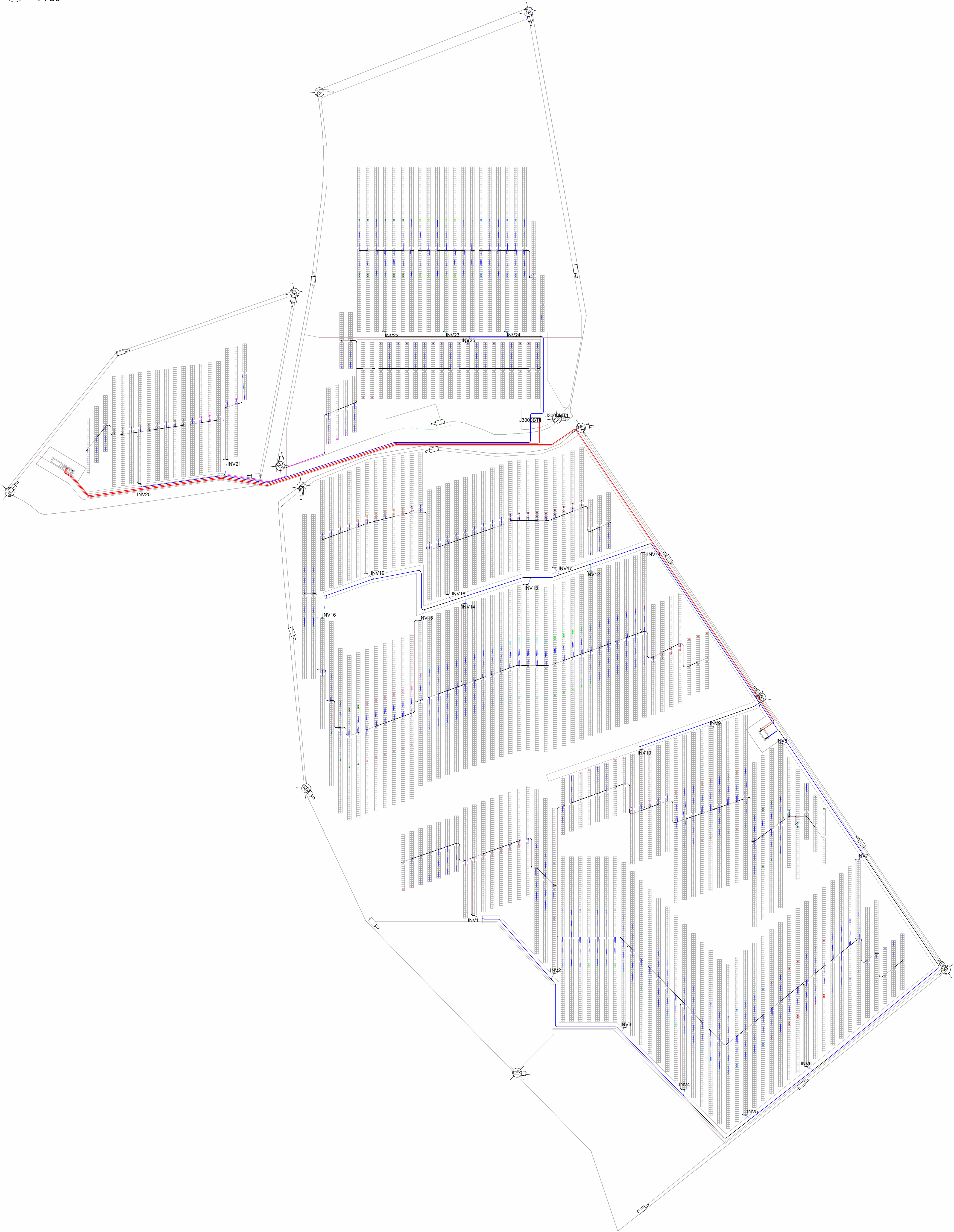


3 Part. installazione inverter
1 : 50


Simbolo	Descrizione	Conteggio
	Terminazione stringa	522
	Inverter	25
	Interruttore di media tensione	3

Legenda
1 : 50



1 Collegamenti elettrici
1 : 1000

Abaco circuiti				
Quadro	Circuito	Quantità	Tipo cavo	MC Longest Branch Length
INV1	Stringa	21	H1Z2Z2-K 2x(1X6)	1413.54 m
INV2	Stringa	21	H1Z2Z2-K 2x(1X6)	1413.54 m
INV3	Stringa	21	H1Z2Z2-K 2x(1X6)	1539.84 m
INV4	Stringa	21	H1Z2Z2-K 2x(1X6)	1539.84 m
INV5	Stringa	21	H1Z2Z2-K 2x(1X6)	1750.31 m
INV6	Stringa	21	H1Z2Z2-K 2x(1X6)	1750.31 m
INV7	Stringa	19	H1Z2Z2-K 2x(1X6)	1844.03 m
INV8	Stringa	21	H1Z2Z2-K 2x(1X6)	1844.03 m
INV9	Stringa	21	H1Z2Z2-K 2x(1X6)	1735.24 m
INV10	Stringa	21	H1Z2Z2-K 2x(1X6)	1735.24 m
INV11	Stringa	23	H1Z2Z2-K 2x(1X6)	1739.09 m
INV12	Stringa	21	H1Z2Z2-K 2x(1X6)	1739.09 m
INV13	Stringa	21	H1Z2Z2-K 2x(1X6)	1632.73 m
INV14	Stringa	21	H1Z2Z2-K 2x(1X6)	1632.73 m
INV15	Stringa	21	H1Z2Z2-K 2x(1X6)	1704.58 m
INV16	Stringa	21	H1Z2Z2-K 2x(1X6)	1704.58 m
INV17	Stringa	21	H1Z2Z2-K 2x(1X6)	1697.46 m
INV18	Stringa	21	H1Z2Z2-K 2x(1X6)	1697.46 m
INV19	Stringa	21	H1Z2Z2-K 2x(1X6)	1597.78 m
INV20	Stringa	21	H1Z2Z2-K 2x(1X6)	1597.78 m
INV21	Stringa	23	H1Z2Z2-K 2x(1X6)	1997.84 m
INV22	Stringa	21	H1Z2Z2-K 2x(1X6)	1997.84 m
INV23	Stringa	21	H1Z2Z2-K 2x(1X6)	1670.32 m
INV24	Stringa	21	H1Z2Z2-K 2x(1X6)	1670.32 m
INV25	Stringa	21	H1Z2Z2-K 2x(1X6)	1678.30 m
J3000BT1	INV20	1	ARG7R16(4G500)	1678.30 m
J3000BT1	INV21	1	ARG7R16(4G500)	1676.53 m
J3000BT1	INV22	1	ARG7R16(4G500)	1676.53 m
J3000BT1	INV23	1	ARG7R16(4G500)	1887.83 m
J3000BT1	INV24	1	ARG7R16(4G500)	1887.83 m
J3000BT1	INV25	1	ARG7R16(4G500)	1552.73 m
J6000BT2	INV1	1	ARG7R16(4G500)	1552.73 m
J6000BT2	INV2	1	ARG7R16(4G500)	1177.52 m
J6000BT2	INV3	1	ARG7R16(4G500)	1177.52 m
J6000BT2	INV4	1	ARG7R16(4G500)	1206.42 m
J6000BT2	INV5	1	ARG7R16(4G500)	1206.42 m
J6000BT2	INV6	1	ARG7R16(4G500)	1090.58 m
J6000BT2	INV7	1	ARG7R16(4G500)	1090.58 m
J6000BT2	INV8	1	ARG7R16(4G500)	1170.02 m
J6000BT2	INV9	1	ARG7R16(4G500)	1170.02 m
J6000BT2	INV10	1	ARG7R16(4G500)	1816.55 m
J6000BT2	INV11	1	ARG7R16(4G500)	1816.55 m
J6000BT2	INV12	1	ARG7R16(4G500)	1639.34 m
J6000BT2	INV13	1	ARG7R16(4G500)	1639.34 m
J6000BT2	INV14	1	ARG7R16(4G500)	1645.62 m
J6000BT2	INV15	1	ARG7R16(4G500)	1645.62 m
J6000BT2	INV16	1	ARG7R16(4G500)	1561.17 m
J6000BT2	INV17	1	ARG7R16(4G500)	1561.17 m
J6000BT2	INV18	1	ARG7R16(4G500)	1266.58 m
J6000BT2	INV19	1	ARG7R16(4G500)	1266.58 m
NVR	Circ. telecamere 1	1		247.18 m
NVR	Circ. telecamere 2	1		207.27 m
NVR	SWITCH	1		175.50 m
SWITCH	Circ. telecamere 3	1		140.41 m
SWITCH	Circ. telecamere 4	1		105.33 m
UT_MT	J3000MT1	1	ARG7H1R(3x120)	128.64 m
UT_MT	J6000MT2	1	ARG7H1R(3x120)	1004.34 m



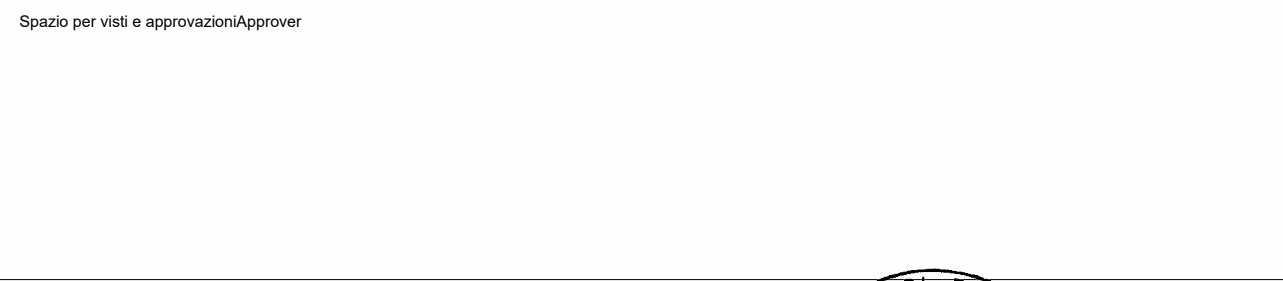
COMUNE DI UGENTO
Provincia di Lecce

Progettazione di un impianto agrivoltaiico denominato "Oleo 2"
Potenza nominale dei moduli fotovoltaici Pdc = 8174.52 kW
Potenza nominale degli inverter Pac = 7500 kW

Catasto Terreni: foglio 63 particella 21
foglio 64 particelle 5, 6, 11

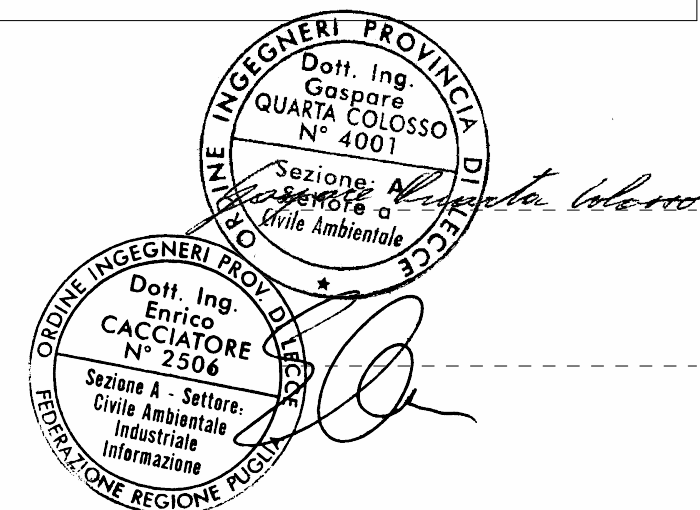
Società proponente: SUNCO SUN GREEN S.R.L., sede a Milano (MI) via Melchiorre Gioia n. 8 (p.iva: 12501100965)
legale rappresentante: SAEZ Bea Julia nata a Tudela (Spagna) il 31/08/1975 (c.f.: S2B JLU 75MT1 Z131P)

Planimetria raggruppamento inverter e posizionamento cabine



I TECNICI
ing. Gaspare QUARTA COLOSSO
(n. 4001 iscrizione ordine Ingegneri provincia di Lecce)

ing. Enrico CACCIATORE
(n. 2506 iscrizione ordine Ingegneri provincia di Lecce)



DATA	SCALA	CODICE FILE
luglio 2023	1:_____	ITA-169-23-B-1-2
M&G s.r.l. via Francesco Antonio Astore n. 2 - 73100 Lecce cell.: 340 1444502 mail: ufficiotecnico.megri@gmail.com		